

Hummingbird Flowers

The following list of native flowering plants are good for attracting hummingbirds to the garden. In south coastal British Columbia, the Rufous Hummingbird is the most common species. Males arrive in March, where the most important nectar species are currants and salmonberry. Both should be considered essential to the hummingbird garden. In planning gardens for hummingbirds it is important to have a succession of flowers throughout the spring and summer to ensure a constant nectar source.

Allium cernuum (nodding onion)
Stachys cooleyae (hedge nettle)
Arbutus menziesii (arbutus)
Arctostaphylos uva-ursi (kinnikinnick)
Arctostaphylos columbiana (manzanita)
Aquilegia formosa (red columbine)
Epilobium angustifolium (fireweed)
Gaultheria shallon (salal)
Linnaea borealis (twinflower)
Lonicera ciliosa (western trumpet honeysuckle)
Lonicera involucrata (black twinberry)
Lonicera hispidula (hairy honeysuckle)
Penstemon fruticosus (shrubby penstemon)
Penstemon serrulata (coast penstemon)
Ribe sanguineum (red-flowering currant)
Ribes lobbii (gummy gooseberry)
Rosa nutkana (Nootka rose)
Rubus spectabilis (salmonberry)
Symphoricarpos mollis (trailing snowberry)
Symphoricarpos albus (western snowberry)
Vaccinium ovatum (evergreen huckleberry)
Vaccinium parvifolium (red huckleberry)
Sidalcea hendersonii (Henderson's checker-mallow)



Food Plants For Other Birds

The following native plants are a good source of food for fruit-eating birds, ranging from American Robins, Varied Thrushes, and Cedar Waxwings to birds as large as Pileated Woodpeckers, Northern Flickers, California Quail and Band-tailed Pigeons.

Amelanchier alnifolia (saskatoon)
Arbutus menziesii (arbutus)
Arctostaphylos uva-ursi (kinnikinnick)
Arctostaphylos columbiana (manzanita)
Cornus stolonifera (red-osier dogwood)
Cornus nuttallii (western flowering dogwood)
Cornus canadensis (bunchberry)
Crataegus douglasii (black hawthorn)
Fragaria chiloensis (coastal strawberry)
Fragaria vesca (wood strawberry)
Gaultheria shallon (salal)
Juniperus communis (common juniper)
Lonicera ciliosa (western trumpet honeysuckle)
Lonicera involucrata (black twinberry)
Lonicera hispidula (hairy honeysuckle)
Mahonia nervosa (dull Oregon-grape)
Mahonia aquifolium (tall Oregon-grape)
Maianthemum dilatatum (false lily-of-the-valley)
Oemleria cerasiformis (indian plum)
Prunus emarginata (bitter cherry)
Prunus pensylvanica (pin cherry)
Prunus virginiana (choke cherry)
Quercus garryana (Garry oak)
Ribes sanguineum (red-flowering currant)
Ribes lobbii (gummy gooseberry)
Rosa gymnocarpa (baldhip rose)
Rosa nutkana (Nootka rose)
Rosa pisocarpa (clustered wild rose)
Rubus parviflorus (thimbleberry)
Rubus spectabilis (salmonberry)
Sambucus cerulea (blue elderberry)
Sambucus racemosa (red elderberry)
Symphoricarpos mollis (trailing snowberry)
Symphoricarpos albus (western snowberry)
Vaccinium ovatum (evergreen huckleberry)
Vaccinium parvifolium (red huckleberry)



Victoria-Area Butterflies and Their Larval Foodplants

In order to really help butterfly populations in the Victoria area, we need to grow plants that provide food for the larval (caterpillar) stages. Many species will accept only one or a few species of plants at this stage. If a butterfly is found near your area, you can probably attract it and help increase its population by planting the correct foodplants for the caterpillars.

Species

Proterpius Duskywing

Two-banded Checkered Skipper

Woodland Skipper

Clodius Apollo *possibly not present*

Anise Swallowtail

Western Tiger Swallowtail

Pale Swallowtail

Pine White

Sara's Orangetip

Purplish Copper

Cedar Hairstreak

Brown Elfin

Moss' Elfin

Grey Hairstreak

Western Spring Azure

Silvery Blue

Satyr Anglewing

Green Comma

Mourning Cloak

Milbert's Tortoiseshell

Painted Lady

Westcoast Lady

Red Admiral

Mylitta Crescent

Lorquin's Admiral

Common Ringlet

Common Woodnymph

Great Arctic

Native Food Plant the Caterpillar Needs

Garry Oak

Strawberry

Native Grasses

Bleeding Heart

Carrot Family

Alder, Willows, Poplars

Alder, Ocean Spray

Douglas-fir

Mustard Family

Dock

Western Redcedar

Arctostaphylos, Arbutus, Salal

Sedum

Pea/Bean Family

Ocean Spray, Dogwood, Hardhack

Lupines

Stinging Nettle

Alder, Willows

Willows, Poplars

Stinging Nettle

Thistles

Stinging Nettle

Stinging Nettle

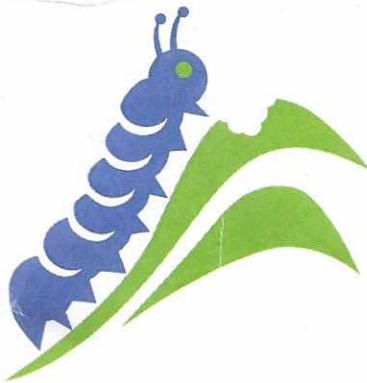
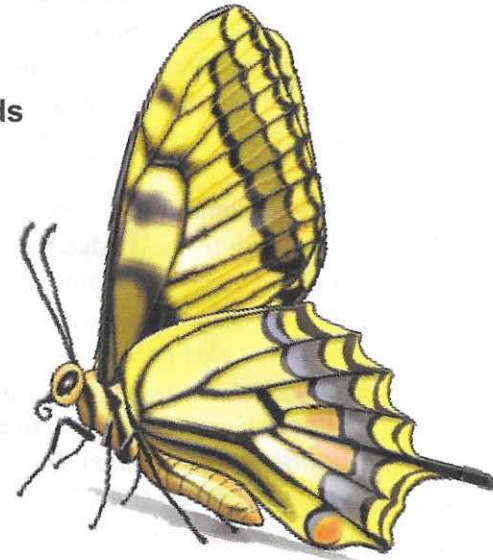
Thistles

Ocean Spray

Native Grasses

Native Grasses

Native Grasses



- Not all the species on this list occur in all areas of Victoria, and some are extremely rare.
- This host list is not complete but includes plants typical of our region.
- Please plant native species as much as possible- they provide the most value and are much more likely to be used by our native butterflies.